

PRODUCT DATA SHEET



Storm Water Management Gross Pollutant Traps (GPT)

water | wastewater | sewage

OVERVIEW

MAK Water's Gross Pollutant Trap (GPT) treats rain and storm water runoff from hardstand or car park areas. The GPT protects the storm water system and the surrounding environment from contaminants such as silt, hydrocarbons, and other debris that can accumulate and be washed off of hardstand and car park areas.

MAK Water GPTs are a cost effective alternative to larger concrete GPTs, which are more expensive to purchase and more time consuming to install.

STANDARD SPECIFICATIONS

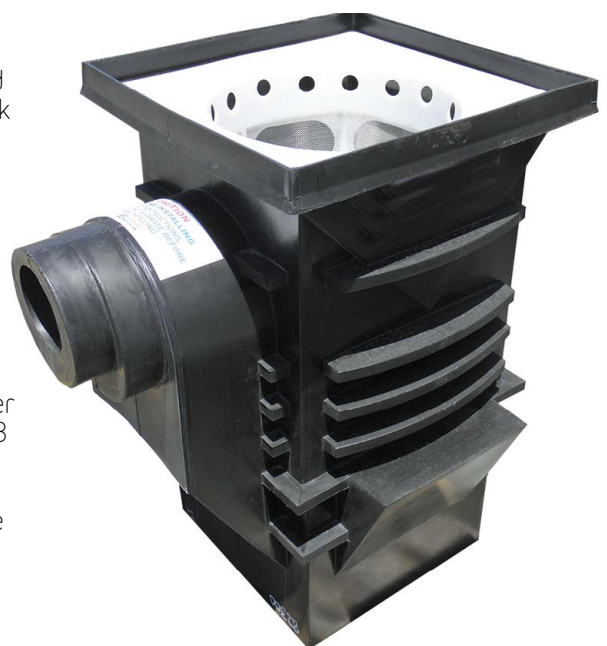
Moulded from a selected grade of polyethylene, MAK Water GPTs are light and easy to install. The external ribbed design provides support and strength to resist external forces from backfilling while reducing the risk of floatation.

Overall Dimensions (mm): 1,400 x 838 x 1,200

The unit utilises a triple action filtering process incorporating a positive baffled separation sump fitted with a tray to remove silt and sediment.

The outlet pipe blister is 400mm wide with a multi-size boss and socket arrangement permitting pipes of varying sizes to be connected using rubber sleeves and stainless steel worm drive clips. This allows pipe cover of 300mm for 300NB and 225NB pipes and 330mm cover to the 150NB connection.

MAK Water GPT Risers can be used if the depth to the pipe needs to be greater. This simply drops into the rim of the pit and locks over the lip.



STANDARD SPECIFICATIONS

Parameter	Units	CM-GPT-SB
Treatable Flow Rate	L/sec	8
Maximum Flow Rate (at By-Pass)	L/sec	30

STANDARD INCLUSIONS + OPTIONS

✓ = Standard Supply o = Optional Supply - = Not Applicable

Equipment	CM-GPT-SB
500L Polymer Tank	✓
V Shaped Screen	-
Silt Basket	✓
B Grate	✓
D Grate	-
Riser	o

MODEL SELECTION

CM-GPT-SB GPT – 500L poly tank, Silt Basket with Class B (Light to Medium Vehicle) Grate

Disclaimer: MAK Water is continuously updating and improving its products and services, so please contact us for more detailed information or to confirm specifications. MAK Water takes no responsibility for any errors resulting from the use of information contained within this document.

NEED A QUOTE?

COMPLETE THIS TABLE
AND EMAIL TO...

sales@makwater.com.au

STD-PDS-010 | MAY 2021